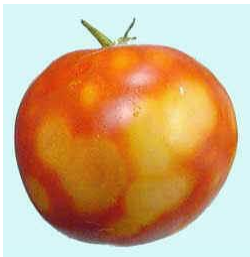


Name _____ Date _____ Period _____



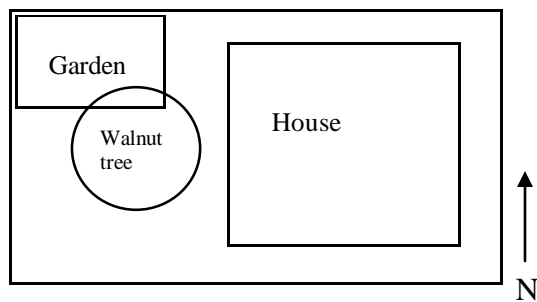
- 1) Given a picture of the above damage to a bean plant, make a recommendation for a biological control in a garden setting and a chemical control in a field setting. Please support your recommendations with explanations as to why you chose that particular approach.



- 2) Given the picture above and that the tomato plant was grown in Western Kentucky an area known for its burley tobacco crop, decide what disease this plant most likely has, then make a recommendation for action to reduce damage for the following growing season.
- 3) You are getting ready to apply malathion to your garden. Outline the procedures you would take to correctly apply the chemical to your garden, which lies about 200 feet behind your house.



- 4) Given the two weeds above, which one could be treatable with 2-4-D? How and when would you apply the chemical to the weed?



- 5) Your yard is set up as shown above. For some reason everything you plant in the southeast corner of the garden never grows. Explain why this is occurring and what you could do to fix it.
- 6) Of the three pesticide labels you have been given, which chemical is the most toxic? How can you tell?
- 7) You are outside mowing your lawn when you notice your neighbor staggering across his yard. You stop mowing and go investigate. As you walk across his yard you notice a sprayer sitting by the flowerbed. What are your actions from this point forward? (What do you look for? What actions do you take? What precautions do you take for your own safety?)